



CODE: PLSR 29

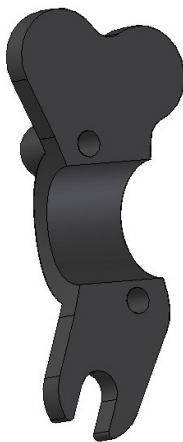


1: MODE

2: LIGHT

3: PIT

TO COMBINE WITH BRSX



MECHANICAL CHARACTERISTICS

- Panel switch manufactured in anodized aluminum
- Higher resistance and reduced weight
- IP69K protection degree
- Laser silkscreen
- Wired with Raychem 105° cable and sealed with RAYCHEM S1125resin

1 - The manufacturer, importer or dealer shall not be liable for any incidental damage including personal injury or any other

damage caused by improper installation or operation of the JETPRIME product.

2 - JETPRIME makes no representation or warranties with regard to damage caused by the improper installation, use and

maintenance of his product . The warranty is limited to defects recognized by our technical department and

to normal use. The guarantee is void in case of accident,modification, improper or race use.

3 - Do not attempt to install the product JETPRIME on a motorcycle for which it was not made or tested by JETPRIME.

4 -The technical specifications of JETPRIME products and related products ar subject to change without any notice.

**JETPRIME S.R.L. Via Eugenio Montale, 1
41016 Novi di Modena - Fraz. Rovereto (MO)
Tel: +39 059 672223 Fax: +39 059 713122
P.iva e c.f 03492390368**